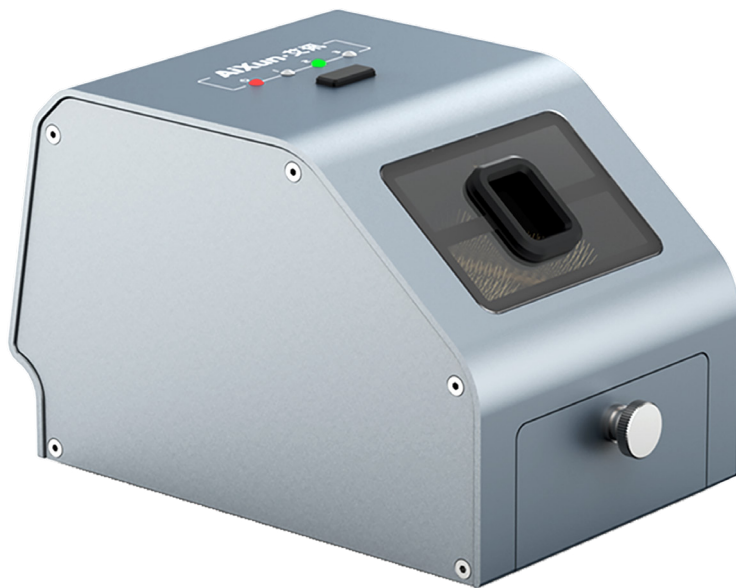


# CM30

## Soldering Tip Cleaner User Manual



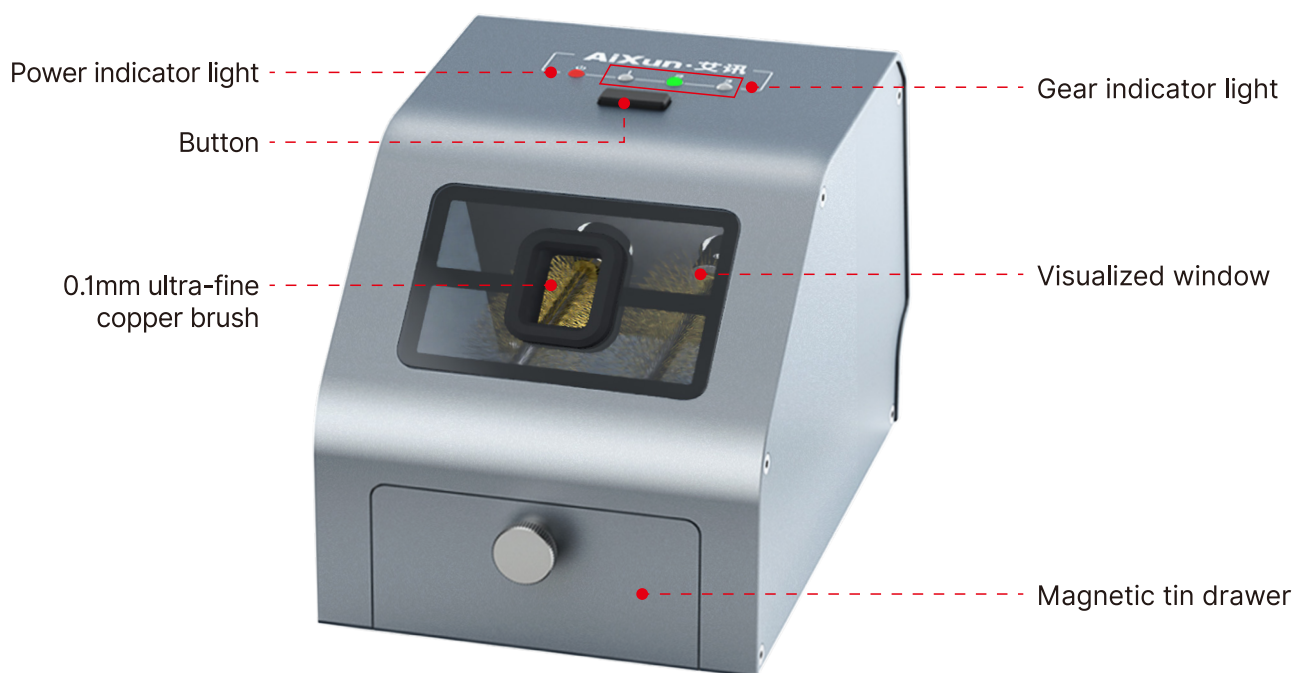
Please read this manual carefully before use

## 1 Product Features

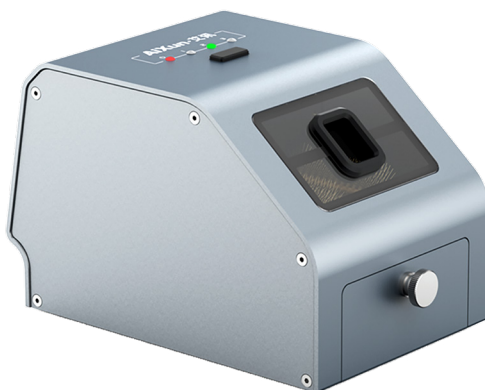
### • Insight into the new era of cleaning through “Eyes” of technology

- Microsecond level sensing, cleaning instantly
- 3000rpm three-level high-speed motor, suitable for various cleaning needs
- Visualized window, display each step of cleaning clearly
- Simple intelligent control, start the operation immediately with one-key
- Classic design of aluminum alloy body, elegant and professional
- 0.1mm ultra-fine copper brush, restoring the original gloss of the soldering tip
- Easy to replace, worry free maintenance, continuous and efficient cleaning
- Magnetic tin drawer, innovative and convenient, easy to clean
- Lightweight and portable, easy to clean anytime at anywhere

## 2 Structures Instruction



## Accessories



CM30 host



Charger



User manual card



Certificate

## 3 Product Parameters

Product name: Soldering Tip Cleaner	Model: CM30
Charger: DC12V 1A DC55 * 21 interface	Max power: 4W
Sensing method: Capacitance sensing	Brushless DC motor: 3000RPM
Brush: Copper x 0.1mm	Net weight: 0.78KG
Gross weight: 1.02kg	Host dimensions: 138.5×87×86.6mm

## 4 Product Operation

- Connect the DC12V 1A charger to the DC interface of the device. After supplying power, the device will turn on
- Long press the button to shut down the device; Press again to power on the device  
(the device is in power-on state every time it is re-charged)



- The power indicator **light is red** when the device is powered on



- Press the "button" to switch gears, the gear indicator **light is green**



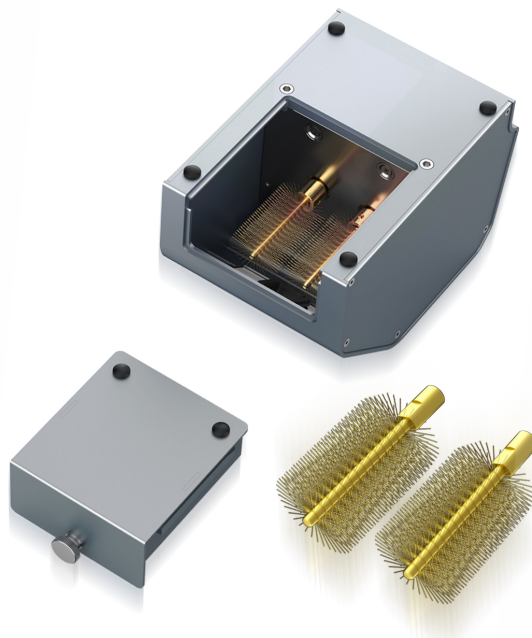
- Place the soldering iron tip to be cleaned into the visualized window, and the machine will start cleaning automatically. The gear can be adjusted according to your needs

### Cautions:

1. Do not put fingers into the machine. The brush is made of hard copper with fast rotate speed, which may injure hands accidentally;
2. Keep out of the reach of children to prevent touch.

## 5 Replace the brush

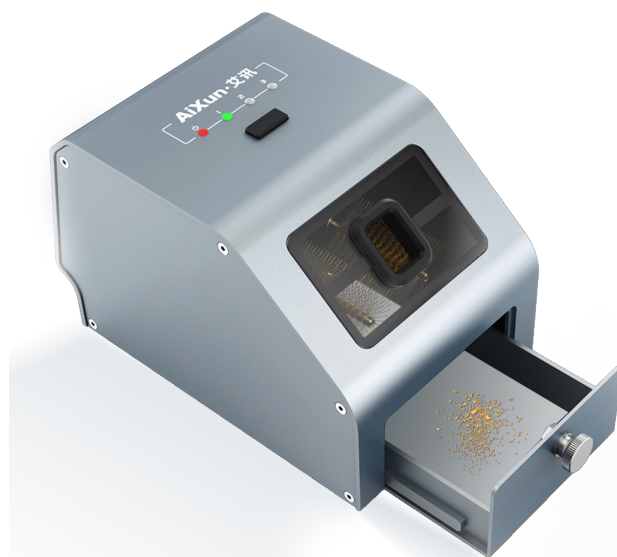
- Turn over the CM30, pull out the "magnetic tin drawer", remove the old brush with a screwdriver, and then install the new brush.



## 6 Clean the tin drawer

- Pull out the "magnetic tin drawer" manually and then clear the impurities inside, convenient and efficient

**Unique magnetic tin drawer design, easy to clean with pull and push, refreshing in one second**



## **7** After Sale Service

### ● Warranty regulations:

- The product is guaranteed for one year from the date of purchase (subject to the purchase certificate).

---

- The warranty service is only valid under normal use. All man-made damage, such as improper use of accessories, failure to use according to instructions, damage not caused by our company's repair, wrong use or negligence, the warranty service will immediately invalid.

---

- The company has the final right to interpret the above regulations for users who do not comply with the above regulations.

Phone: (+86) 400-875-9688

Website: [aixun.com](http://aixun.com)

Address: Room 402, 4th Floor, Building 2,  
IOT Industrial Park, 4012 Wuhe Blvd, Bantian  
Street, Longgang District, Shenzhen

服务热线: 400-875-9688

品牌官网: [aixun.com](http://aixun.com)

地址: 深圳市龙岗区坂田街道五和大道4012号  
IOT物联网产业园2栋4楼402(403)

